



GMT MONTHLY MEMBERSHIP PROGRESS REPORT

Results as of: 1/31/2017

Multiple District 44

LOCATION: NEW HAMPSHIRE

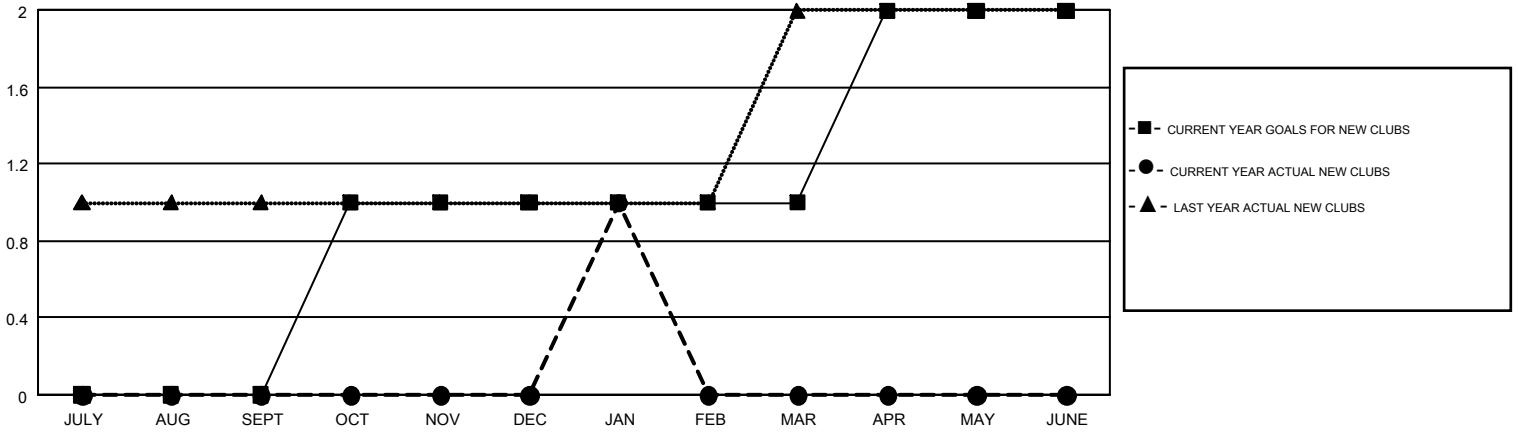
GMT: ED LECIUS

GMT CA 1

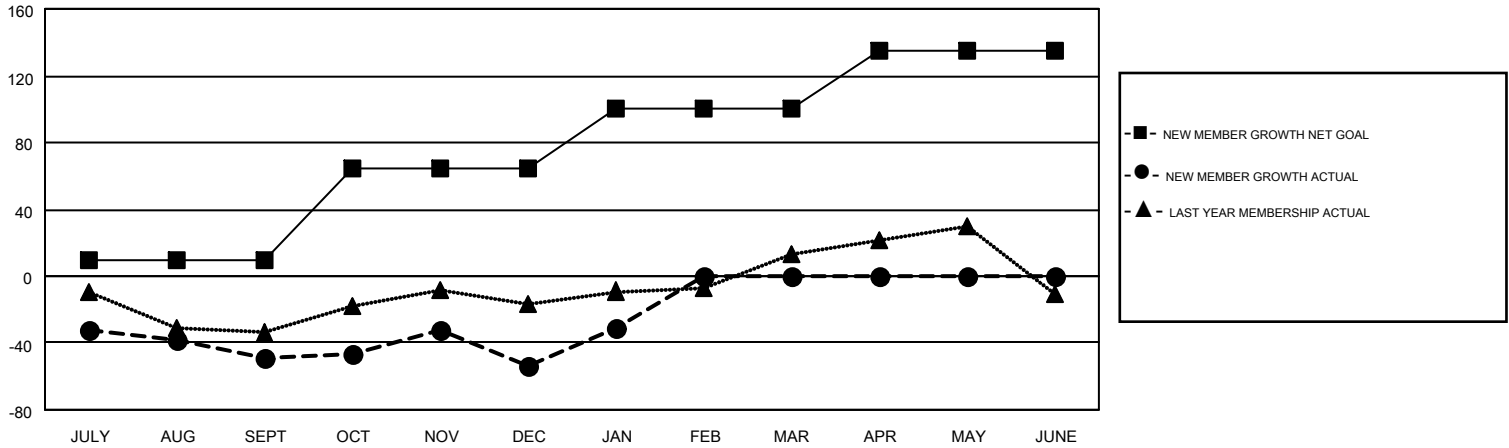
| Clubs | | | |
|-----------------------|---------------|-----------|---------------|
| RESULTS FOR 2016-2017 | | | |
| QUARTER | NEW CLUB GOAL | NEW CLUBS | DROPPED CLUBS |
| JULY/AUG/SEPT | 0 | 0 | 0 |
| OCT/NOV/DEC | 1 | 0 | 0 |
| JAN/FEB/MAR | 0 | 1 | 0 |
| APR/MAY/JUNE | 1 | 0 | 0 |

| Members | | | |
|-----------------------|--|--|--|
| RESULTS FOR 2016-2017 | | | |
| QUARTER | NEW MEMBER GROWTH NET GOAL (not reinstated or transfers) | NEW MEMBER GROWTH ACTUAL (not reinstated or transfers) | DROPPED MEMBERS ACTUAL (including transfers) |
| JULY/AUG/SEPT | 10 | 49 | 98 |
| OCT/NOV/DEC | 55 | 63 | 68 |
| JAN/FEB/MAR | 35 | 33 | 10 |
| APR/MAY/JUNE | 35 | 0 | 0 |

GOALS AND ACTUAL NEW CLUBS CUMULATIVE



GOALS AND ACTUAL MEMBERS CUMULATIVE



| | | | |
|------------------------|--|---------------------------------|----------------|
| DROPPED CLUBS: 0 | 38 CLUBS OF 79 ADDED 1 OR MORE NEW MEMBERS | <u>GENDER DISTRIBUTION</u> | |
| <u>DROPPED MEMBERS</u> | | MALE | 1,395 (61.37%) |
| DECEASED | 19 | FEMALE | 878 (38.63%) |
| CLUB CANCELLED | 0 | TOTAL FAMILY UNIT MEMBERS | 645 |
| OTHER | 157 | FAMILY MEMBERS PAYING HALF DUES | 331 |
| TOTAL | 176 | | |

[CLICK HERE FOR CUMULATIVE MEMBERSHIP DATA](#)